

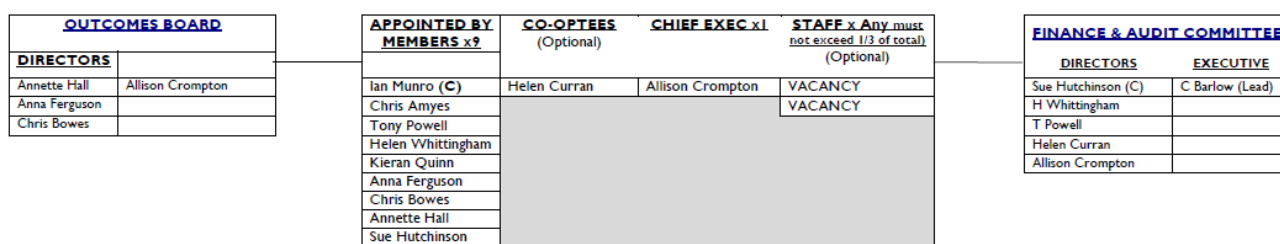
Governance Arrangements 16.17

Governor	Appointed by Trust Board	Term of Office	Term of Office ends	Declaration of Interest
Deborah Ball (Chair)	13/03/2017	4 Years	Mar-2021	See separate spreadsheet
Christine Birchall	13/03/2017	4 Years	Mar-2021	See separate spreadsheet
Greg Suligowski	13/03/2017	4 Years	Mar-2021	No business interest declared
Mike O'Hare	13/03/2017	4 Years	Mar-2021	See separate spreadsheet
Cath How	13/03/2017	4 Years	Mar-2021	See separate spreadsheet

Attendance Record

Governor	Attended	Possible Meetings	Percentage
Deborah Ball (Chair)	3	3	100%
Christine Birchall	3	3	100%
Greg Suligowski	2	3	66%
Mike O'Hare	2	3	66%
Cath How	3	3	100%

GOVERNANCE STRUCTURE – SEPTEMBER 2017



Great Academy Ashton	
GAET x7	PARENT x2
Deborah Ball (C)	VACANCY
Mike O'Hare	VACANCY
Cath Howe	Principal (Optional)
Christine Birchall	Jenny Langley
Greg Suligowski	